

Lost River Retreat Center

2015 Mill Gap Road
Lost City, WV 26810
(304) 897-5935

To make a reservation contact:

Hank Dunn – 703-869-0376

hank@hankdunn.com

The Vienna Baptist Church

541 Marshall Road, SW

Vienna, VA 22180

(703) 281-4400

Fax (703) 281-3535

officemanager@vbc-va.org

<http://www.vbc-va.org/lrrc/index.html>

The Lost River Retreat Center provides year-round comfortable accommodations for groups large and small. The facilities include two lodges nestled between mountains for hiking and a large open meadow for recreation and sports. The property includes hiking trails, an overlook tower, a pond, streams and several outdoor worship and meeting spaces.

All guestrooms are heated, carpeted and have private baths. Blankets and pillows are provided and bed linens and towels are available at additional cost. The maximum retreat size is approximately 50 people.

The Main Lodge features a large fireplace area for conversation and relaxing and our dining area with meals provided by our staff. There is also a separate room (38 X 18) used for meetings and recreation. There are five guest rooms. Four of the rooms have two bunk beds each. One room is handicap accessible and has a double bed and one bunk bed. Total sleeping capacity is 20. WiFi provides high-speed internet access.

The North Lodge offers a larger meeting room (28 X 24) and ten guest rooms. Each room has one bunk bed, one single bed and one double bed. Total sleeping capacity is 50.

Located on 43 acres in the Potomac Highlands of West Virginia, Lost River Retreat Center is about a two-hour drive from Washington, DC.

Public swimming is available at the nearby Trout Pond Recreation Area in the George Washington National Forest (4 miles) and at Lost River State Park (12 miles). The state park also has horseback riding. Within a half-hour drive are numerous trailheads for mountain hikes including from Wolf Gap to the rock outcrop the Big Schloss.

The Vienna Baptist Church in Northern Virginia owns and operates the Lost River Retreat Center. Contact the church for reservations and information.

LOST RIVER RETREAT CENTER RATES AND POLICIES

RATES FOR GROUPS (per person)					
Please NOTE: Rooms occupied by less than 3 people must pay for double occupancy or private rooms					
	TWO NIGHTS (4 or 5 Meals)	TWO NIGHTS (6 Meals)	ONE NIGHT (2 Meals)	ONE NIGHT (3 OR 4 Meals)	ADDITIONAL NIGHTS
Adults /Youth (grades 7 & up)- 3 or more to a room	\$110.00	\$120.00	\$64.00	\$72.00	\$35.00
Adults/Youth – Double Occupancy	\$149.00	\$158.00	\$86.00	\$97.00	\$44.00
Adults/Youth- Private room	\$199.00	\$213.00	\$118.00	\$132.00	\$64.00
Children (grades 1-6)	\$72.00	\$78.00	\$45.00	\$53.00	\$25.00
Ages 3-5	\$40.00	\$45.00	\$25.00	\$34.00	\$17.00

- You will be charged for 10 adults if less than 10 attend. (If you are reserving the retreat center for exclusive use the minimum charge is \$3,500 for a two-night retreat and \$2,500 for one night.)
- Additional meals available by arrangement for \$10.00 per person Lunch or Supper and \$7.00 for Breakfast.
- Dinner can be served on the night of arrival as late as 7:00 PM.
- Retreaters should bring their own sleeping bag or bed linens, towels, pillow, etc. Blankets are provided. Linens are available for \$10.00 per set.
- West Virginia State sales tax (6%) and Hardy County Hotel Occupancy Tax (3%) is added to the above rates unless you have a tax exempt number on file with us and all payments are made on checks from the tax exempt organization.

FOOD IS NOT ALLOWED IN SLEEPING ROOMS, a refrigerator is available for guests to use.

ALL CHARGES ARE SUBJECT TO WEST VIRGINIA SALES TAX (6%) and Hardy County Hotel Occupancy Tax (3%) unless tax exemption forms have been filed with the Lost River Retreat Center and all payments are made on checks from the tax exempt organization.

RESERVATIONS: Reservations are not confirmed until a Retreat Contract and deposit have been received. Your tentative reservation will be held for three weeks pending receipt of your deposit. After that time your dates are subject to being released to others.

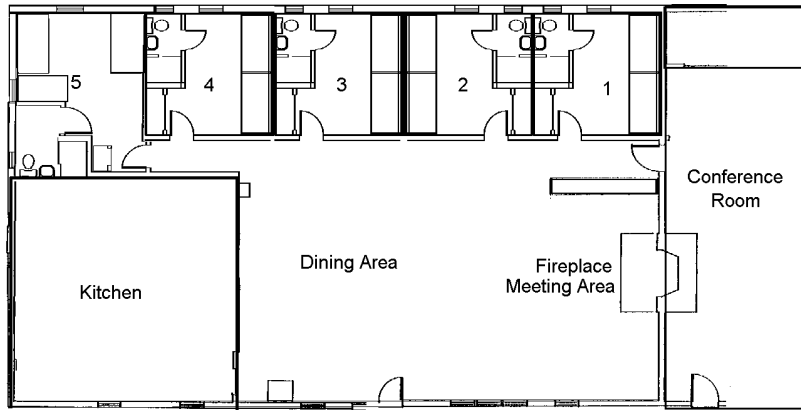
DEPOSITS: A deposit of \$300.00 is required for groups up to 34 people. Groups of 35 or more require a deposit of \$500.00. Any lesser deposit will not guarantee your reservation. Deposit checks should be made payable to "Lost River Retreat Center" and mailed to Vienna Baptist Church.

CANCELLATIONS: To ensure the financial health and viability of the Retreat Center, we must serve the maximum number of groups possible. Therefore, the following cancellation policy must be strictly followed:

- DEPOSITS WILL BE REFUNDED FOR CANCELLATIONS RECEIVED 90 DAYS PRIOR TO THE SCHEDULED RETREAT DATES.
- ONE HALF OF DEPOSITS WILL BE REFUNDED FOR CANCELLATIONS RECEIVED 31-89 DAYS PRIOR TO THE SCHEDULED RETREAT DATES.
- FOR CANCELLATION RECEIVED 30 DAYS OR LESS PRIOR TO THE SCHEDULED RETREAT DATES NO REFUND OF DEPOSITS WILL BE MADE.

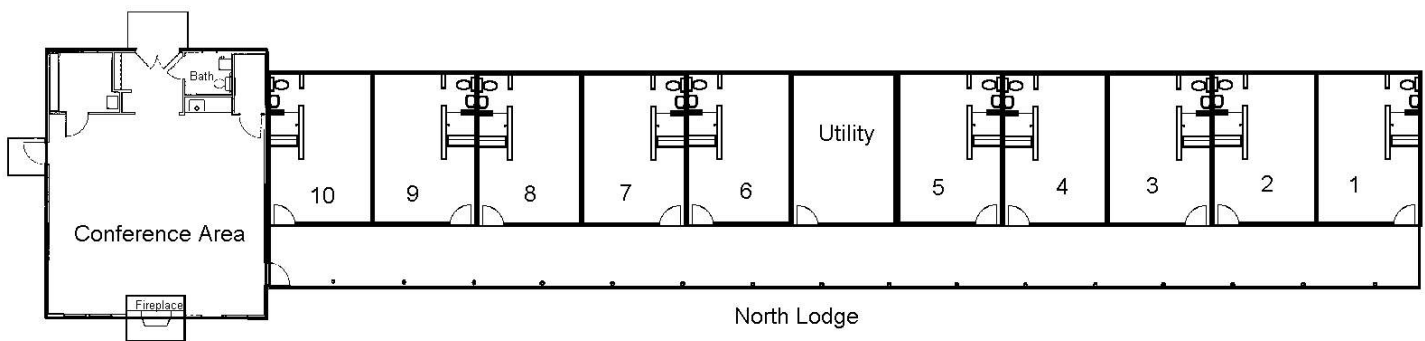
EXCLUSIVE USE OF THE RETREAT CENTER: If your group is smaller than 35 people, another small group may be scheduled for the same dates. In order to assure exclusive use, a minimum fee of \$2500 (one night) or \$3,500 (two night retreat). Exclusive use must be requested at the time your deposit is submitted. The deposit for exclusive use is \$500.

Lost River Retreat Center Floor Plans



Main Lodge

Rooms generally have two sets of bunk beds and a bathroom.
Room five has a handicapped accessible bath and a double bed.



North Lodge

Generally rooms have a bathroom, one double bed, one single bed, and one set of bunk beds.

Lost River Retreat Center

a Ministry of Vienna Baptist Church

Sleeping Arrangements Worksheet

Use this sheet to plan your room arrangements.

NORTH LODGE BEDS

Two portable single beds are also available for this lodge

ROOM 1: Double: _____
Single: _____
Bunks: _____

ROOM 6: Double: _____
Single: _____
Bunks: _____

ROOM 2: Double: _____
Single: _____
Bunks: _____

ROOM 7: Double: _____
Single: _____
Bunks: _____

ROOM 3: Double: _____
Single: _____
Bunks: _____

ROOM 8: Double: _____
Single: _____
Bunks: _____

ROOM 4: Double: _____
Single: _____
Bunks: _____

ROOM 9: Double: _____
Single: _____
Bunks: _____

ROOM 5: Double: _____
Single: _____
Bunks: _____

ROOM 10: Double: _____
Single: _____
Bunks: _____

Lost River Retreat Center

a Ministry of Vienna Baptist Church

Sleeping Arrangements Worksheet

Use this sheet to plan your room arrangements.

MAIN LODGE BEDS

One portable single bed is available in this lodge.

ROOM 1: Bunks: _____

Bunks: _____

ROOM 2: Bunks: _____

Bunks: _____

ROOM 3: Bunks: _____

Bunks: _____

ROOM 4: Bunks: _____

Bunks: _____

ROOM 5: *Handicapped Accessible*

Double: _____

Bunks: _____

How to get to Lost River Retreat Center:
DO NOT USE MAPQUEST OR OTHER COMPUTER DIRECTIONS SERVICE AS IT SENDS YOU
ON SOME VERY BAD BACK ROADS!
304-897-5935

From Fairfax/Vienna:

Take I-66 west to I-81 south.

Take Exit #296 (Right turn at end of exit ramp) go west on route 55 about 20 miles to Wardensville

Approaching Wardensville, LEFT, south on Rt. 259 into Wardensville (a known speed trap)

After you leave Wardensville you will be directed onto a four-lane portion of Rt. 55. Continue west about 7 miles.

EXIT at Baker. At end of exit ramp turn LEFT onto 259 South

In about a half mile you must turn LEFT to stay on 259. From Baker it is about 8 miles to

LEFT (east) on Mill Gap/Trout Pond Road, Rt. 16 (look for Lost R. Retreat Center sign on right of road) go about 2 miles to

LEFT into Retreat Center (look for Retreat Center sign on left side of road)

From Reston/Herndon:

Take Dulles Toll Road/Greenway to Rt. 7 Bypass West around Leesburg.

Continue toward Winchester.

Take I-81 north. Exit at the first exit #317

LEFT at light at end of ramp to go west or south on Routes 11 & 37 following signs "To Rt. 50".

Follow route 37 around Winchester exit route 50 west.

RIGHT at end of exit ramp to go west on 50 past Gore to

LEFT on route 259 south. Follow 259 through Wardensville (a known speed trap)

After you leave Wardensville you will be directed onto a four-lane portion of Rt. 55. Continue west about 7 miles.

EXIT at Baker. At end of exit ramp turn LEFT onto 259 South

In about a half mile you must turn LEFT to stay on 259. From Baker it is about 8 miles to

LEFT (east) on Mill Gap/Trout Pond Road, Rt. 16 (look for Lost R. Retreat Center sign on right of road) go about 2 miles to

LEFT into Retreat Center (look for Retreat Center sign on left side of road)

FROM THE SOUTH:

Take I-81 North to exit 257 (Mauzy / Broadway) and turn left. Turn right at the light and follow route 259 North to Broadway. In Broadway turn left at the light (still route 259). Follow route 259 North into West Virginia, passing through the towns of Mathias and Lost City. Three miles beyond Lost City, turn right on Mill Gap / Thorn Bottom Road. (LRRRC sign) LRRRC is another two miles on the left.

FROM WINCHESTER, VA AND NORTH:

Take hwy 50 west of Winchester to hwy 259 South (just west of Gore).

LEFT on route 259 south. Follow 259 through Wardensville (a known speed trap)

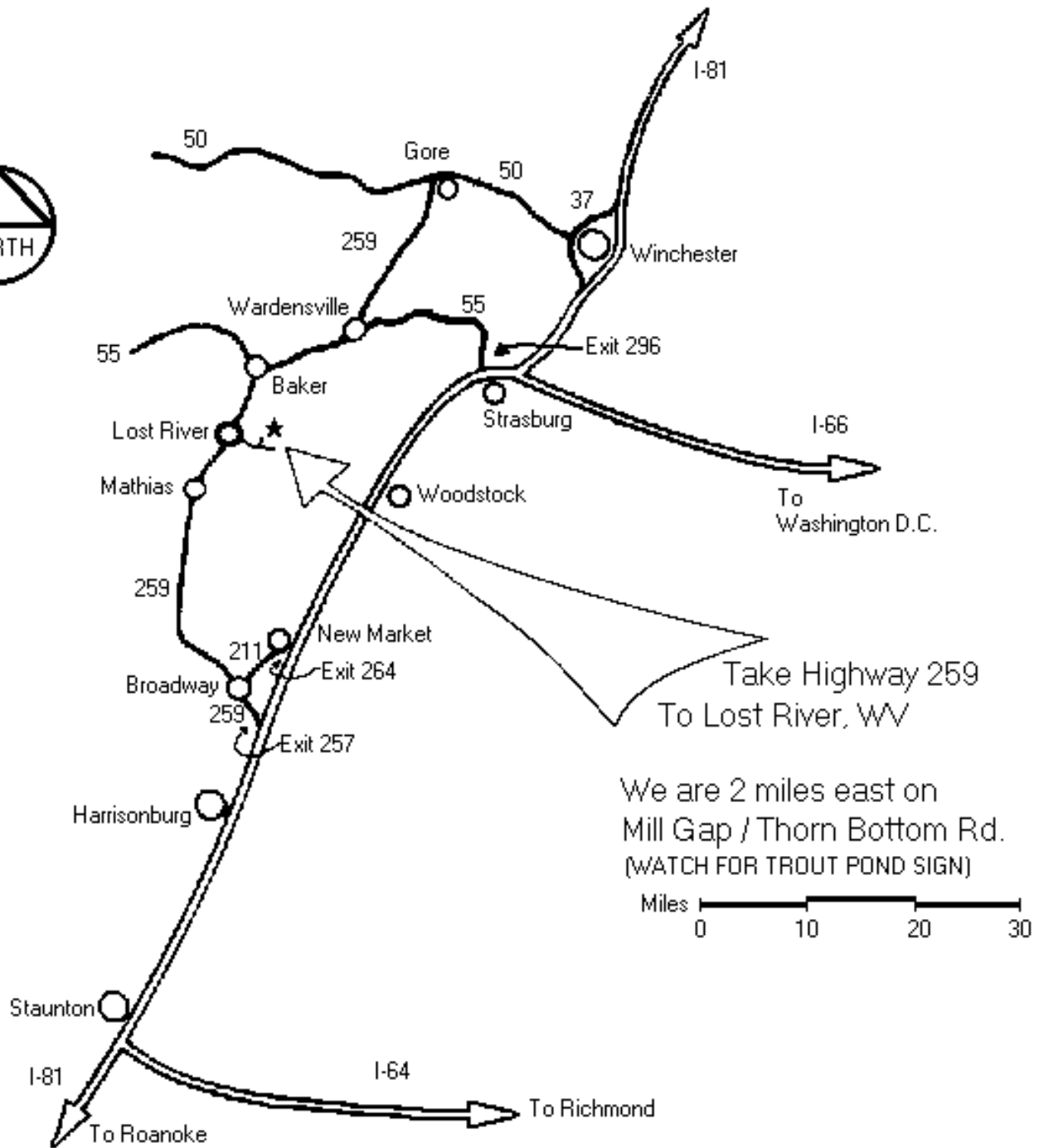
After you leave Wardensville you will be directed onto a four-lane portion of Rt. 55.

Continue west about 7 miles. EXIT at Baker. At end of exit ramp turn LEFT onto 259 South

In about a half mile you must turn LEFT to stay on 259. From Baker it is about 8 miles to

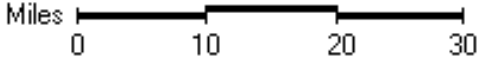
LEFT (east) on Mill Gap/Trout Pond Road, Rt. 16 (look for Lost R. Retreat Center sign on right of road) go about 2 miles to

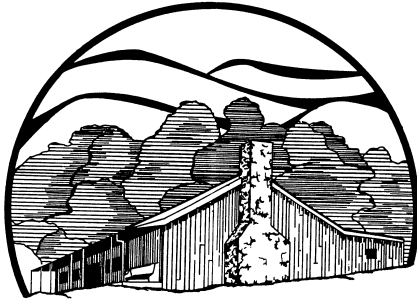
LEFT into Retreat Center (look for Retreat Center sign on left side of road)



Take Highway 259
To Lost River, WV

We are 2 miles east on
Mill Gap / Thorn Bottom Rd.
(WATCH FOR TROUT POND SIGN)





Lost River Retreat Center

A ministry of Vienna Baptist Church

2015 MILL GAP ROAD
LOST CITY, WV 26810
(304) 897-5935
lrrc@hardynet.com

NOTICE

As a part of our insurance coverage, we are required to ask groups to provide us with a copy of their certificate of insurance. These certificates are easily obtained from your insurance agent.

If provided, your group's certificate of insurance remains as the primary coverage for retreat participants. Coverage provided for the LOST RIVER RETREAT CENTER then becomes a secondary form of coverage to your group.

Please provide LRRC a copy of your insurance certificate with your contract and deposit.

THANK YOU